

# OFFICE SUITE FOR LEASE

## BUCKINGHAM GREEN

**PENN'S GRANT REALTY**  
Corporation

*4936 York Road*  
*Buckingham, Bucks County, PA*

COMMERCIAL • INDUSTRIAL • INVESTMENT



**PRESENTED BY:** Kurt Eisenschmid, CCIM - Penn's Grant Realty Corporation

2005 S Easton Rd, STE 306, Doylestown, PA • 215-489-3800 x3 • Kurt@pgr Realty.com • www.pgr Realty.com

## PROPERTY SPECIFICATIONS

**Building:** .....Two story, elevator served  
12,000± SF office building

**Available Space:**

**Suite 2200** .....879± SF - 2nd Flr, available immediately

**Suite 2300** . 1,709± SF - 2nd Flr, available immediately

**Daily Traffic Counts:** ..... 16,838

**Population within 5 miles radius (2014):** .....54,218

**Average Household Income within 5 mile radius (2014):** ..... \$141,129

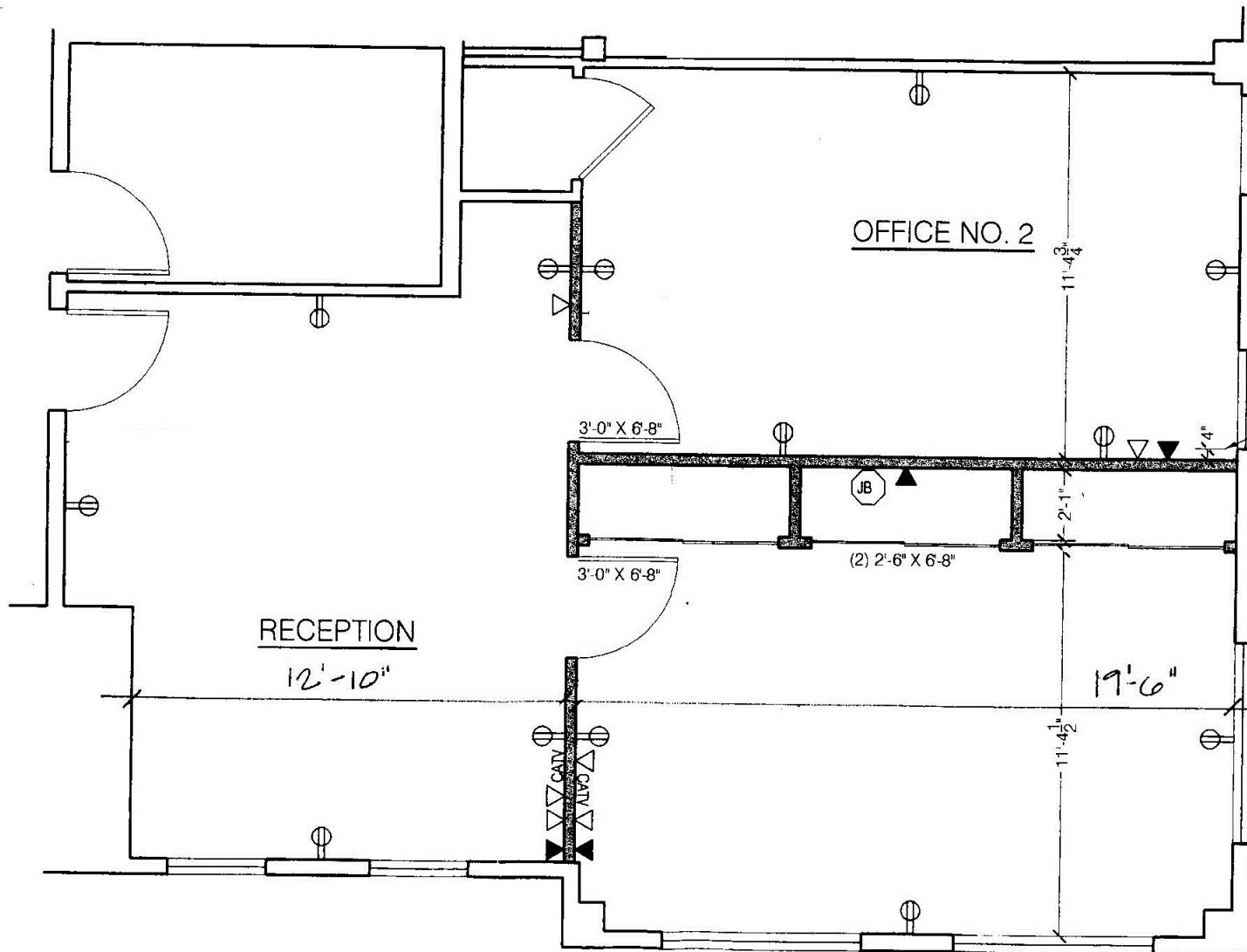
**Zoning:** ..... LC— Limited Commercial

**Municipality:** .....Buckingham Township

**Suite 2200 Lease Price:** ..... \$21 per SF  
(\$1,538.25 per month) plus utilities and \$55 per month  
HVAC maintenance contact

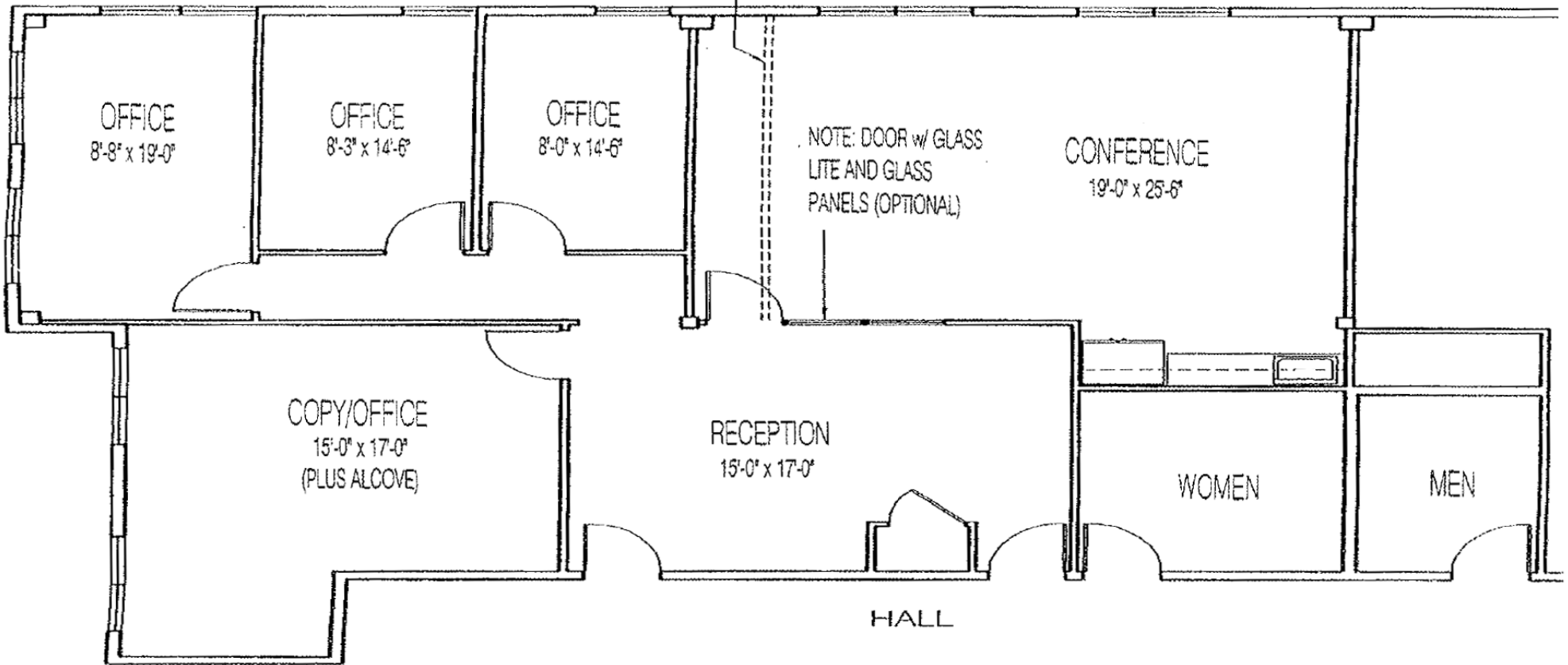
**Suite 2300 Lease Price:** ..... \$21 per SF  
(\$2,990.75 per month) plus utilities and \$55 per month  
HVAC maintenance contact





Suite 2200 — 879± SF

OPTION  
MOVE WALL OF  
CONFERENCE RM.  
TO FRONT SIDE OF  
COLUMN, ADD +/-  
1'-6" TO EACH  
OFFICE



Suite 2300 — 1,700 SF

