



FOR LEASE

CLASS "A" OFFICE SPACE

**2500 York Road
Jamison, Bucks County, PA**

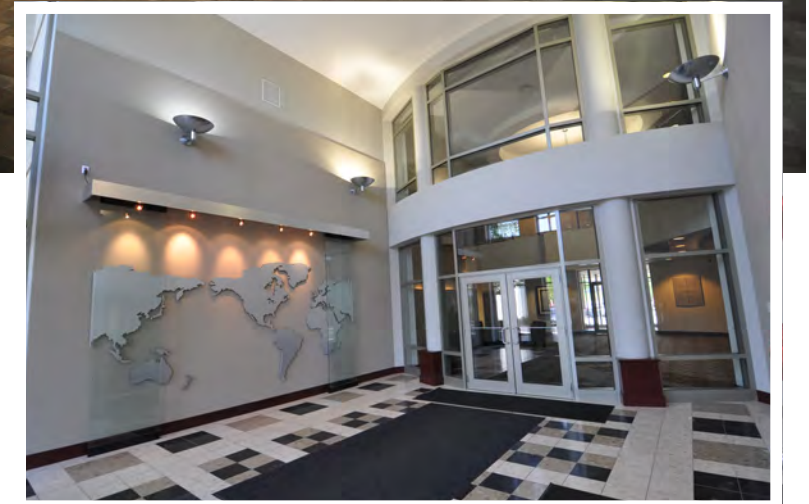
COMMERCIAL • INDUSTRIAL • INVESTMENT

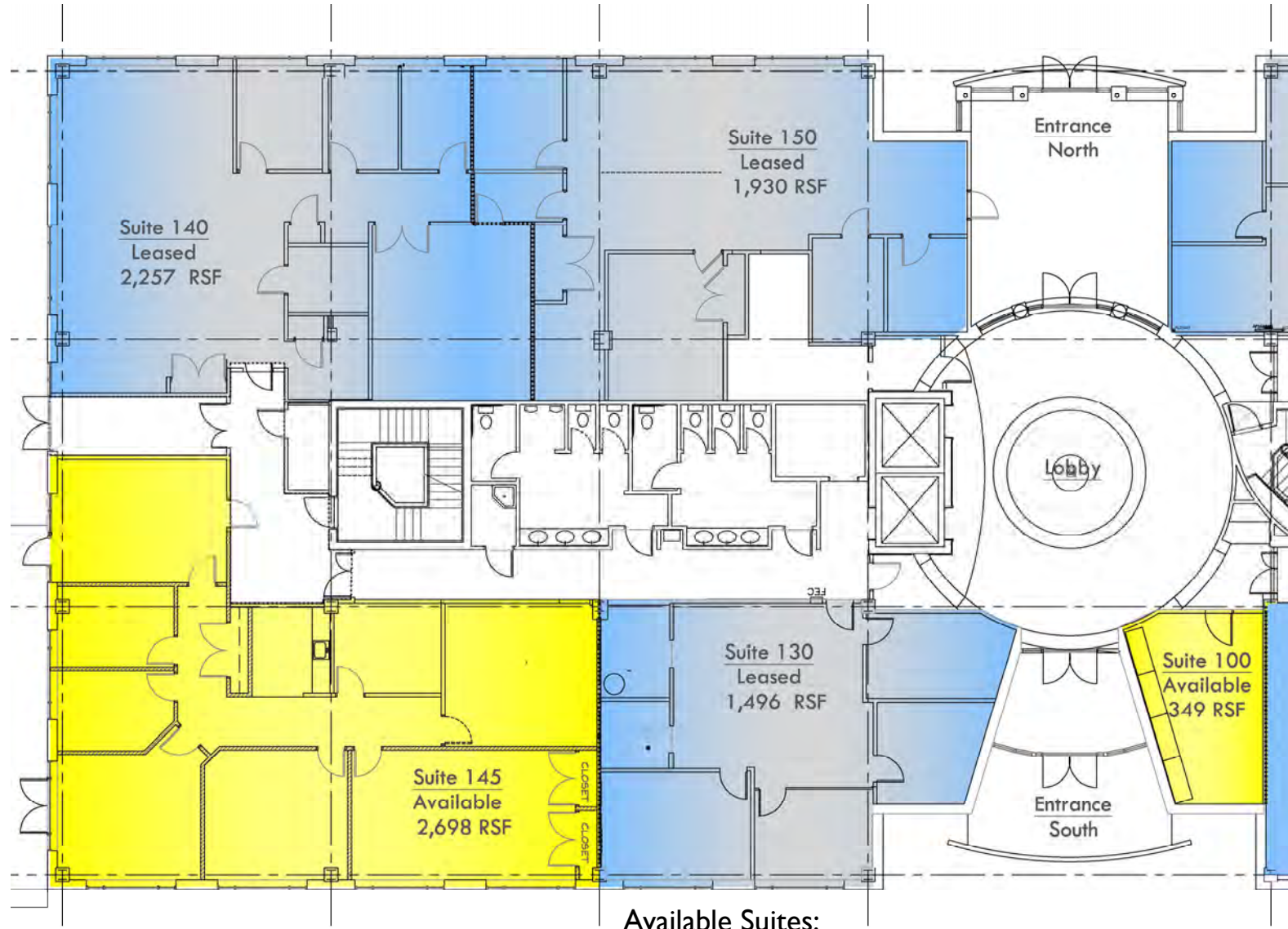
High Visibility Location



PROPERTY FEATURES

- **Two office suites available on the first floor**
 - Suite 100 - 349 Sq. Ft.
 - Suite 145 - 2,698 Sq. Ft.*Private exterior & interior entrances*
- **Dramatic 2 story lobby atrium with balcony**
- **Daily janitorial services included**
- **Building access security system**
- **Excellent parking ratio**
- **Abundant natural light - Floor to ceiling window lines**
- **Auxiliary power for data communications**
- **Signalized intersection**
- **Floor plans can be modified to suit**
- **\$22.50 PSF plus utilities**





Suite 100 - 349± RSF

Suite 145 - 2,698± RSF

