



# FOR LEASE OFFICE SUITES

**875 North Easton Road  
Doylestown, Bucks County, PA**

COMMERCIAL • INDUSTRIAL • INVESTMENT



**PRESENTED BY:** Kurt Eisenschmid, CCIM — Penn's Grant Realty Corporation  
2005 S Easton Rd, STE 306, Doylestown, PA • 215-489-3800 x3 • [kurt@pgrealty.com](mailto:kurt@pgrealty.com) • [www.pgrealty.com](http://www.pgrealty.com)



## Property Highlights

One story office center with direct access to parking lot on both front and rear exits of the office suite. Convenient location near the 611 bypass, on the North Easton Road Doylestown corridor. Close to thriving retail businesses, which are all easily accessed by a large affluent community which are within minutes drive of this outstanding location.

### DEMOGRAPHICS

Daily Traffic Counts:	11,098		
Drive Time:	<u>5 min.</u>	<u>10 min.</u>	<u>15 min.</u>
Population:	9,295	50,967	107,969
Avg. Household Income:	\$109,243	\$126,904	\$129,395

### PROPERTY SPECIFICATIONS

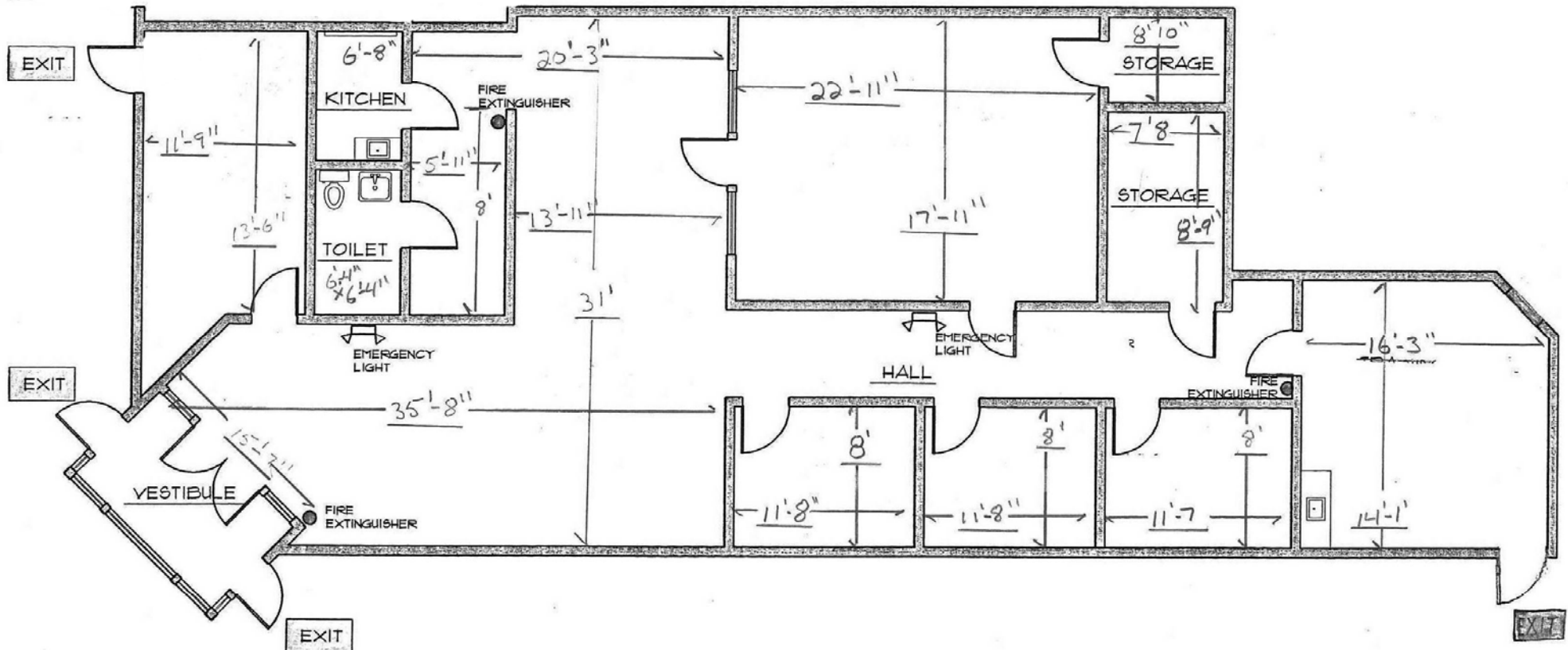
Parking: ..... On-site  
 Zoning: ..... R3  
 Municipality: ..... Plumstead Township

#### Suite 1

Suite Size: ..... 2,610± SF  
 Lease Rate: ..... \$18/SF  
 plus utilities, cleaning, HVAC contract

#### Suite 6B

Suite Size: ..... 463± SF  
 Lease Rate: ..... \$18/SF  
 plus utilities, cleaning, HVAC contract



**Suite 1 - 2,610± SF**

