

FOR LEASE

Retail/Office Space



**15 Clemens Road
Doylestown, Bucks County, PA**

COMMERCIAL • INDUSTRIAL • INVESTMENT



PRESENTED BY: Gary Funk — Penn's Grant Realty Corporation
2005 S Easton Rd, STE 306, Doylestown, PA • 215-489-3800 x4 • Gary@pgrealty.com • www.pgrealty.com

PROPERTY HIGHLIGHTS

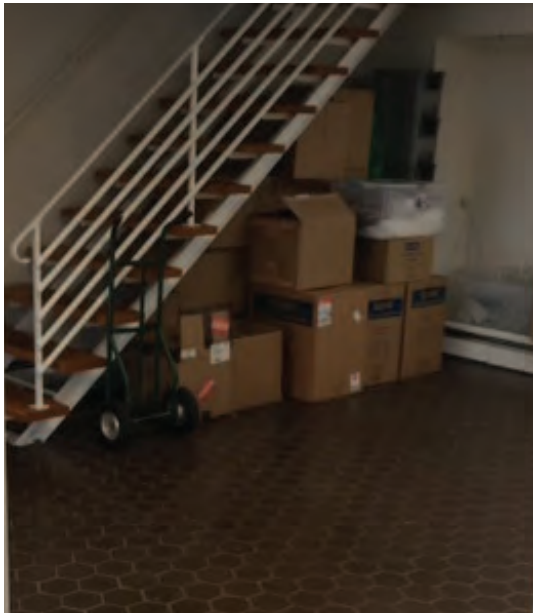
- Great Doylestown Borough Location
- Walking Distance to Bucks County Court House, Shopping, Restaurants, and Museums
- Walking Distance to Public Transit - SEPTA Bus Stops and Train Station
- Easy Access to Route 202 Parkway & 611 Doylestown Bypass
- Half Block Off S. Main Street



PROPERTY SPECIFICATIONS

Space Available: 1,000± SF (on two floors)
 HVAC: : Oil hot water baseboard and air conditioning (combination individual units & heat pump)
 Water: Public
 Sewer: Public
 Gas: Public

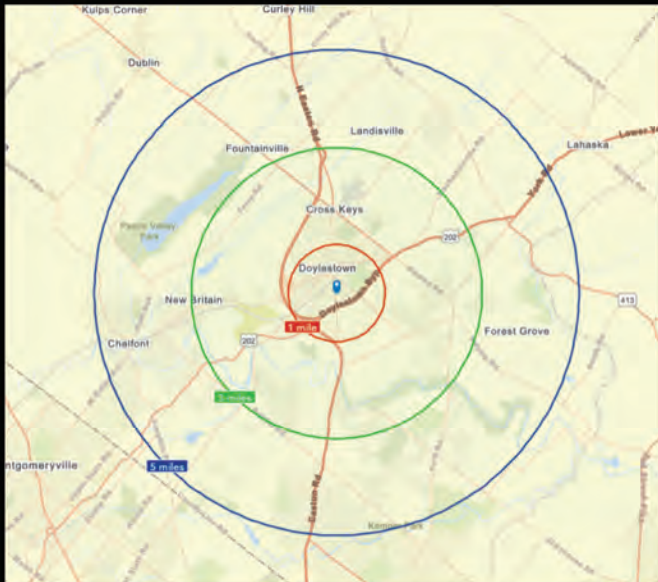
Utilities: PECO
 Parking: 3 spaces
 Municipality: Doylestown Borough
 Zoning: R3
 Lease Price: \$1,300 plus utilities



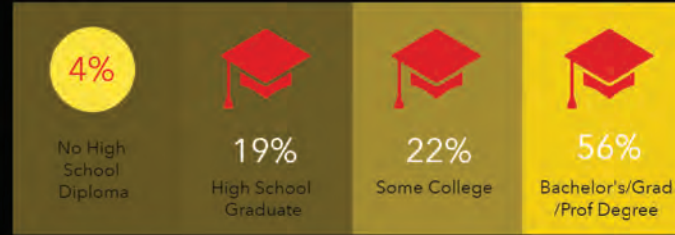
DEMOGRAPHIC PROFILE

15 Clemens Rd, Doylestown, Pennsylvania, 18901

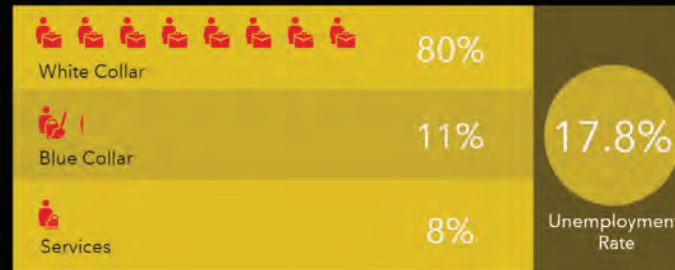
Ring of 5 miles



EDUCATION



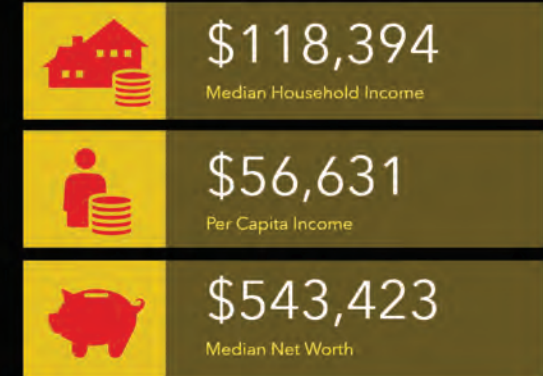
EMPLOYMENT



KEY FACTS



INCOME



HOUSEHOLD INCOME (\$)

