



FOR LEASE OFFICE SUITE

***200 S. Clinton Street
Doylestown Borough, Bucks County, PA***

COMMERCIAL • INDUSTRIAL • INVESTMENT



PRESENTED BY: Kurt Eisenschmid, CCIM - Penn's Grant Realty Corporation
2005 S Easton Rd, STE 306, Doylestown, PA • 215-489-3800 x3 • Kurt@pgrealty.com • www.pgrealty.com



Property Highlights

- 1,715±SF Available Suite
- Two Story Brick Office Building
- Ample of On-site Parking
- Great Borough Location
- Easy Access to Route 202 Parkway & 611 Bypass
- Walking Distance to Restaurants, Shopping, Bus Stop and Train Station

Property Specifications

Available Space:Second floor 1,715± SF

Parking: 20 shared spaces

Utilities: Tenant responsible for seperately metered electric utilities

HVAC:Central heat and A/C (electric heat pump)

Misc.: Landlord to provide janitorial services and routine/ordinary trash removal

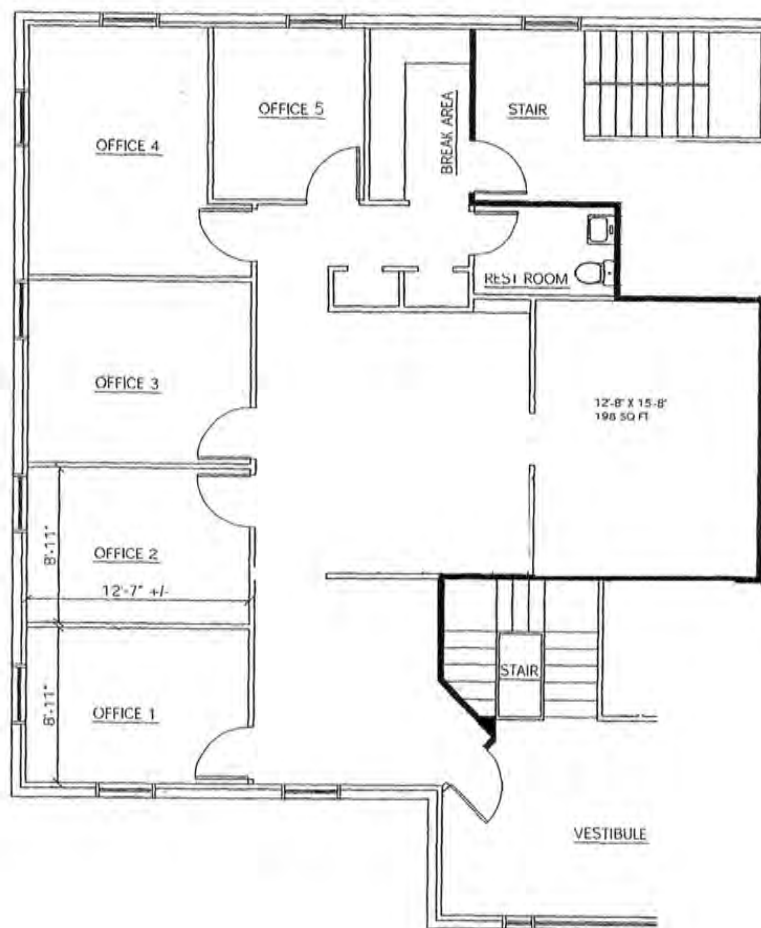
Security Deposit: Sum equal to two months of rent

Municipality:Doylestown Borough

Lease Rate:\$19.50 per SF plus utilities (cleaning included)







Second Floor 1,715± Sq. Ft.

