

**FOR LEASE**

# “Plumstead Crossing” Retail Space

PENN'S  GRANT REALTY  
Corporation

*6045 Kellers Church Road  
Plumstead Township, Bucks County, PA*

COMMERCIAL • INDUSTRIAL • INVESTMENT



**PRESENTED BY:** Gary Funk — Penn's Grant Realty Corporation  
2005 S Easton Rd, STE 306, Doylestown, PA • 215-489-3800 x4 • Gary@pgrealty.com • www.pgrealty.com

**PROPERTY SPECIFICATIONS**

Space Size: ..... 1,013± SF

Location: ..... Plumstead Crossing

Parking: ..... To Code

Bathrooms: ..... One (1) ADA Bathrooms

HVAC: ..... Electric Heat Pump

Water: ..... Public

Sewer: ..... Public

Utilities: ..... PECO

Municipality: ..... Plumstead Township

Zoning: ..... VC - Village Commercial

Tax Parcel: ..... 34-004-008C130

Real Estate Taxes (2021): ..... \$2,780

Real Estate Assessment: ..... \$16,900

Monthly Condominium Association Fees: ..... \$578.72 (\$6.82 PSF)

Lease Price: ..... \$1,000/month, plus utilities and interior cleaning



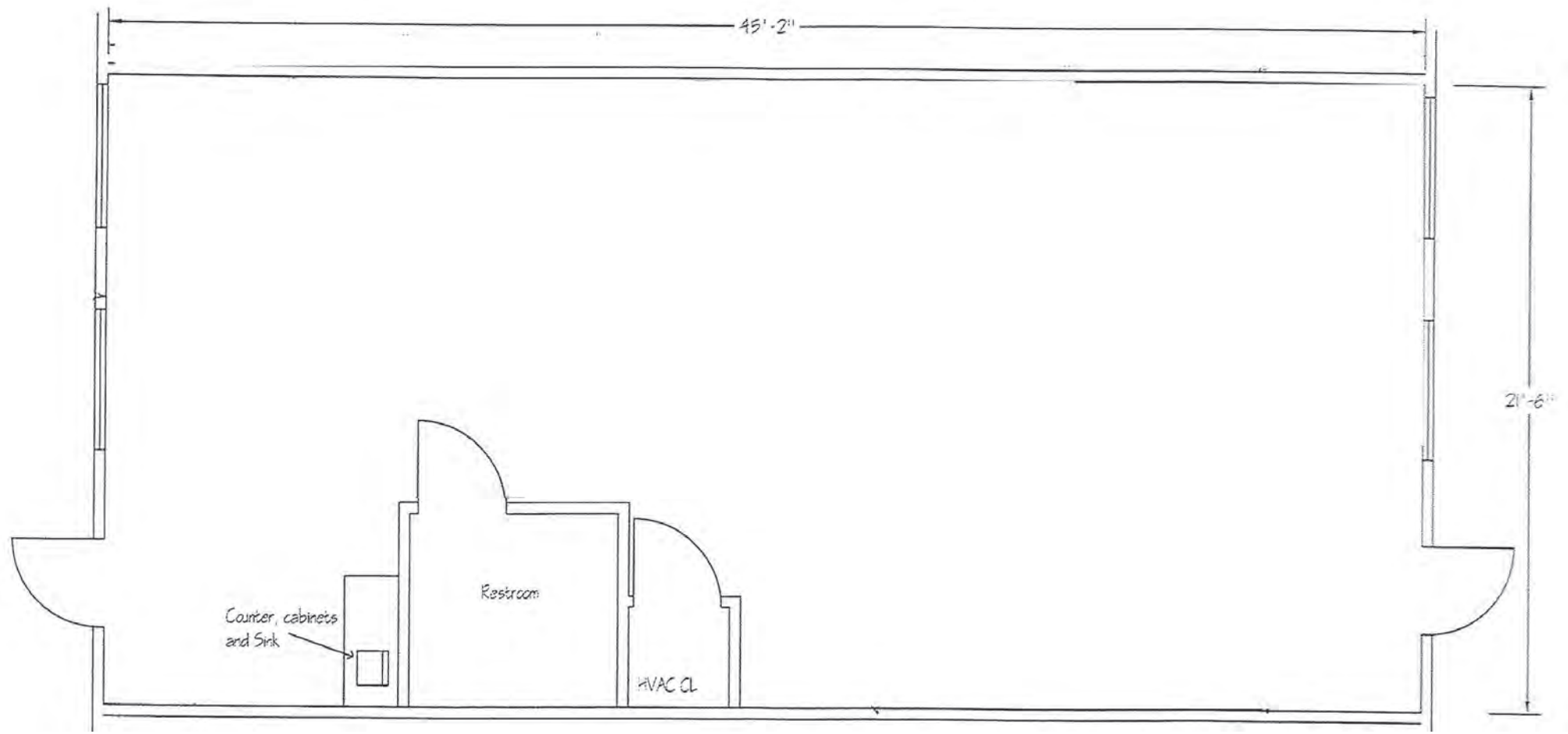
Plumstead Crossing is a 48,000± square foot community shopping/office center. Consisting of four (4) two story colonial style buildings with retail space on the First Floor and office space on the Second Floor. Each building includes one (1) elevator and two (2) staircases to the Second Floor.

**PROPERTY HIGHLIGHTS**

- **Newly Refurbished with New Paint, New Flooring, New LED Lighting, New Heat Pump, & New Hot Water Heater**
  - **High Traffic Location**
- **Located on Corner of Route 611 & Kellers Church Road**
  - **Fully Carpeted**
  - **One ADA Bathroom**
- **5 Minutes North of Doylestown**

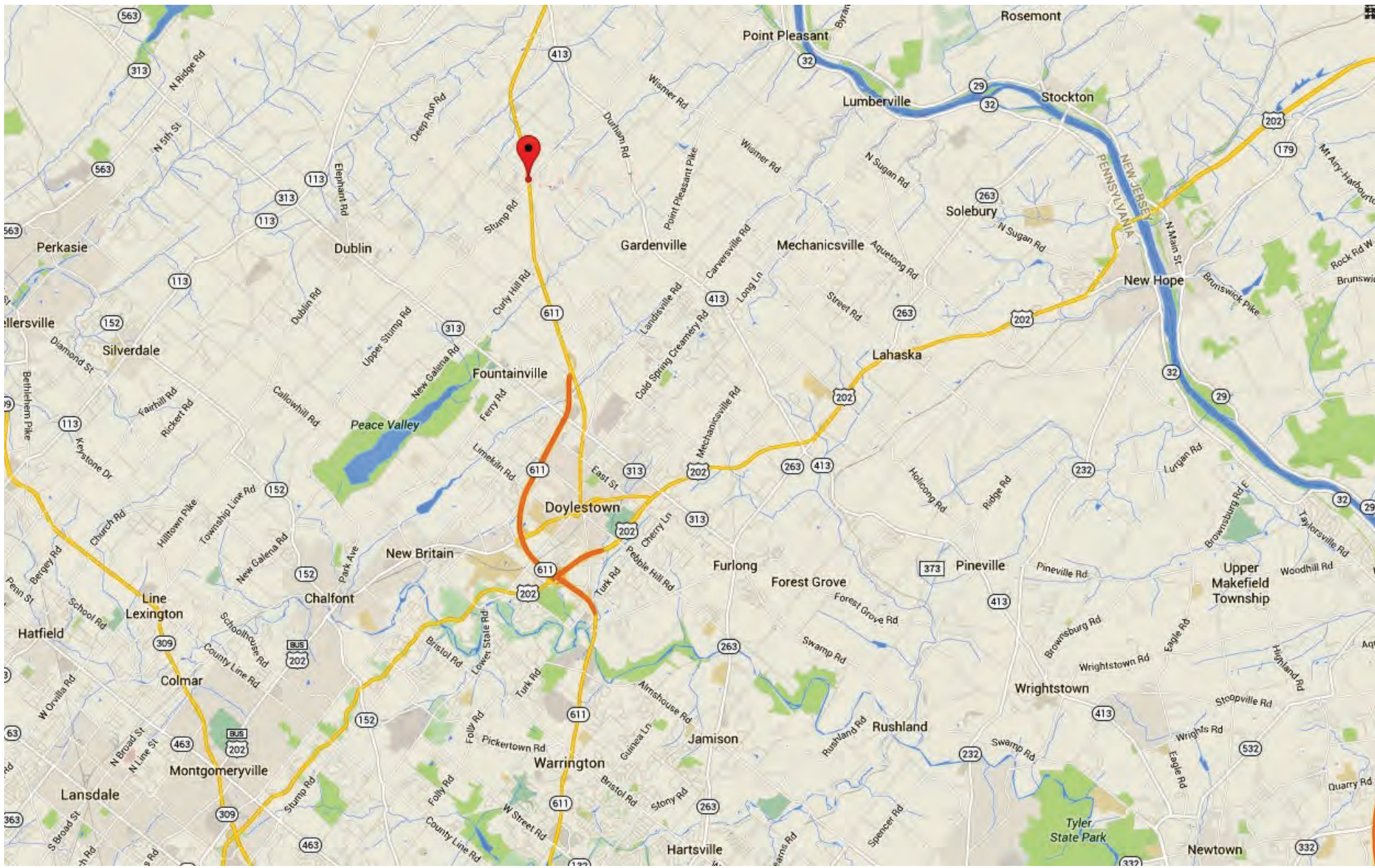


Unit 103 - 1,013± SF



Unit 103 - 1,013± SF

6045 KELLERS CHURCH ROAD, PLUMSTEAD TOWNSHIP, PA



6045 KELLERS CHURCH ROAD, PLUMSTEAD TOWNSHIP, PA

