

FOR LEASE “LANTERN HILL” OFFICE SUITES

PENN'S GRANT REALTY
Corporation
COMMERCIAL INDUSTRIAL INVESTMENT
www.pgrealty.com

99 Lantern Drive, Doylestown Borough, Bucks County, PA

Office Suite 201B - 2,158 SF



PRESENTED BY:

KURT EISENSCHMID
215-489-3800 x3 • Kurt@pgrealty.com

MATTHEW EISENSCHMID
215-489-3800 x5 • Matthew@pgrealty.com

Penn's Grant Realty Corporation - 2005 S Easton Rd, STE 306, Doylestown, PA

PROPERTY HIGHLIGHTS

- **Class "A" Office Building**
- **Abundant of Natural Light**
- **Easy access to Route 611 Bypass (1/10 mile)**
- **Restaurant & Retail Businesses Within One Block**
- **On-site Fitness Center**

AVAILABLE SUITES

SUITE 201B

Private Offices; Conference Room; Kitchenette; Open Work Area; Storage Area

Suite Size: 2,158± SF

Location in Building: 2nd Floor

Lease Price: \$23.50 per Sq. Ft., plus utilities & cleaning

SUITE 301

Private Offices; Conference Room; Kitchenette

Suite Size: 2,478± SF

Location in Building: 3rd Floor

Lease Price: \$23.50 per Sq. Ft., plus utilities & cleaning

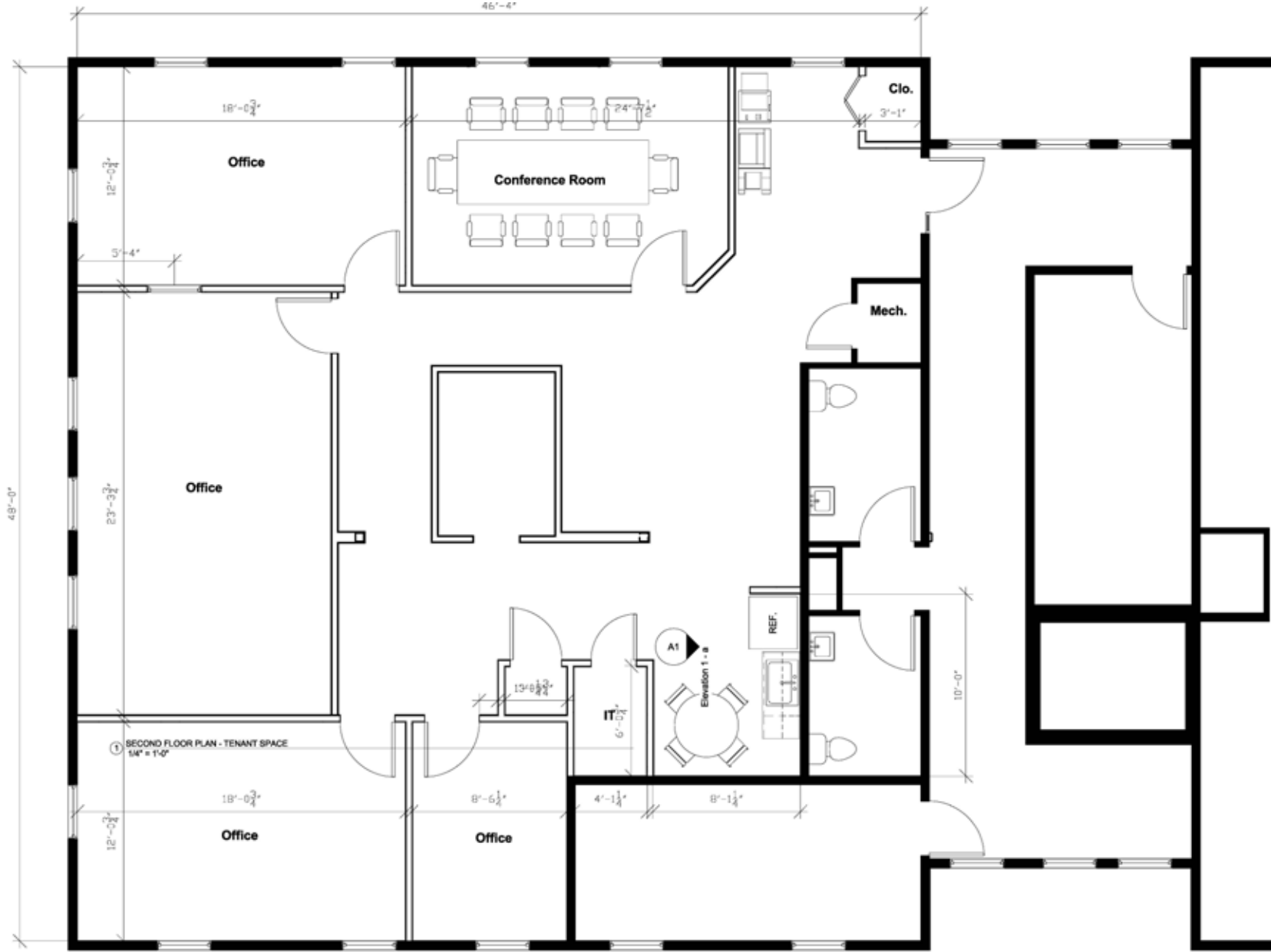


99 Lantern Drive, Doylestown, Bucks County, PA

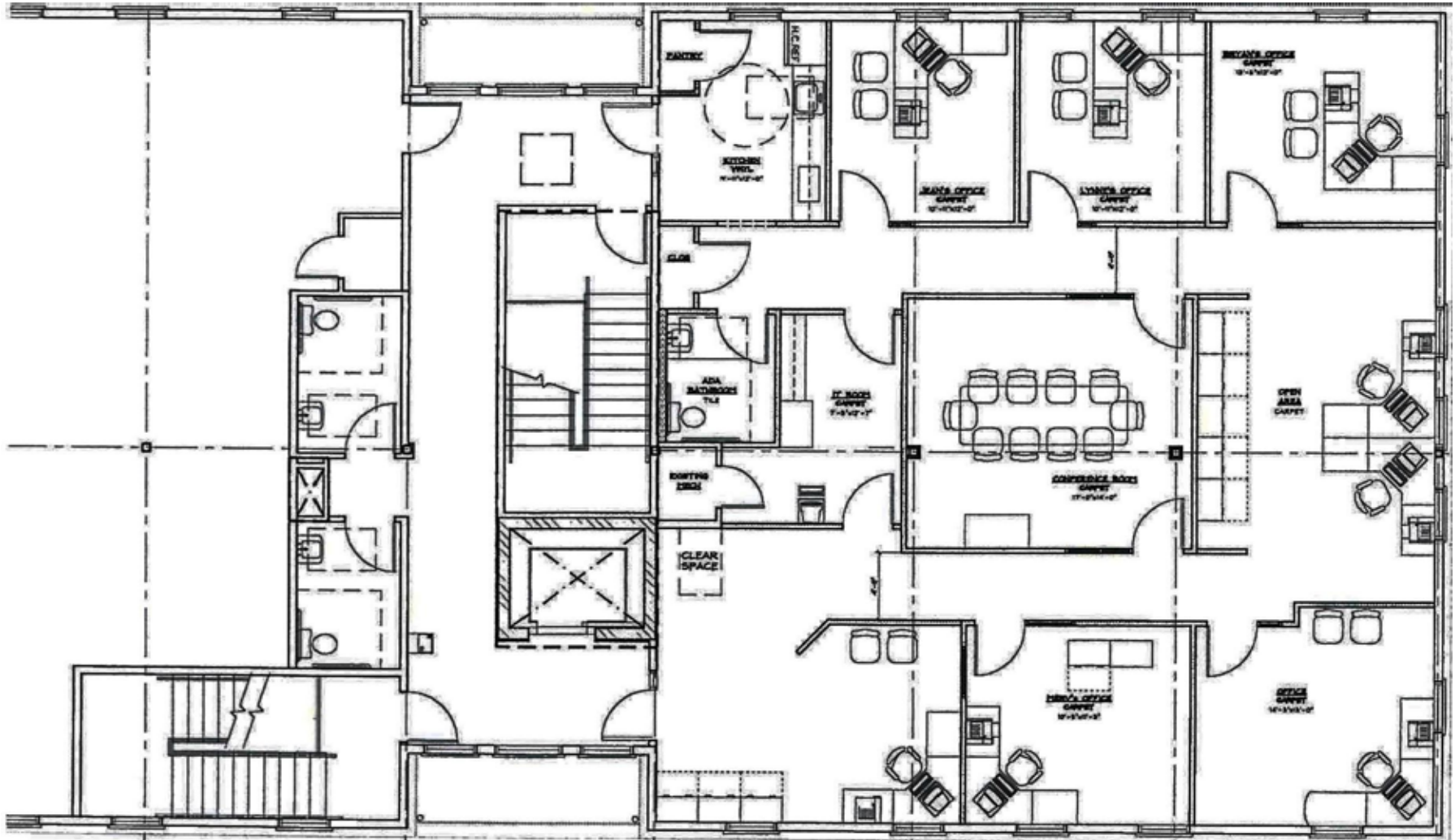
PENN'S GRANT REALTY
Corporation



SUITE 201B - 2,158± SF



SUITE 201B - 2,158± SF



SUITE 301 - 2,478± SF

99 Lantern Drive, Doylestown, Bucks County, PA

