

FOR LEASE

“Lantern Hill” Office Suites

PENN'S  GRANT REALTY
Corporation

**99 Lantern Drive
Doylestown Borough, Bucks County, PA**

COMMERCIAL • INDUSTRIAL • INVESTMENT



PRESENTED BY: Kurt Eisenschmid, CCIM — Penn's Grant Realty Corporation
2005 S Easton Rd, STE 306, Doylestown, PA • 215-489-3800 x3 • Kurt@pgr Realty.com • www.pgr Realty.com

PROPERTY HIGHLIGHTS

- **Class "A" Office Building**
- **Abundant of Natural Light**
- **Easy access to Route 611 Bypass (1/10 mile)**
- **Restaurant & Retail Businesses Within One Block**
 - **On-site Fitness Center**

AVAILABLE SUITES

SUITE 201A

Private Offices; Kitchenette; Open Work Area

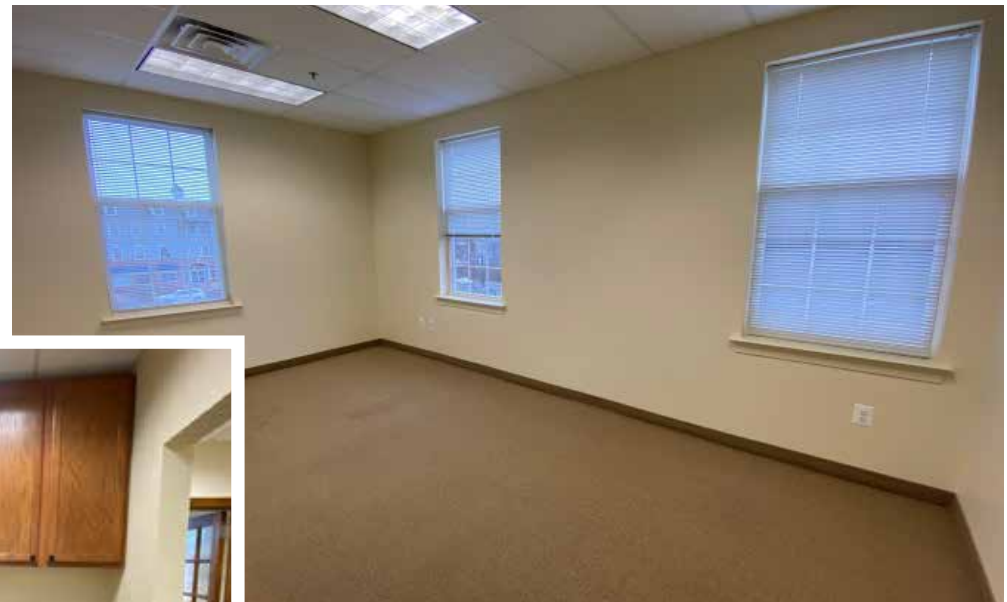
Suite Size: 1,154± SF
 Location in Building: 2nd Floor
 Lease Price: \$23 per Sq. Ft., plus utilities & cleaning

SUITE 302

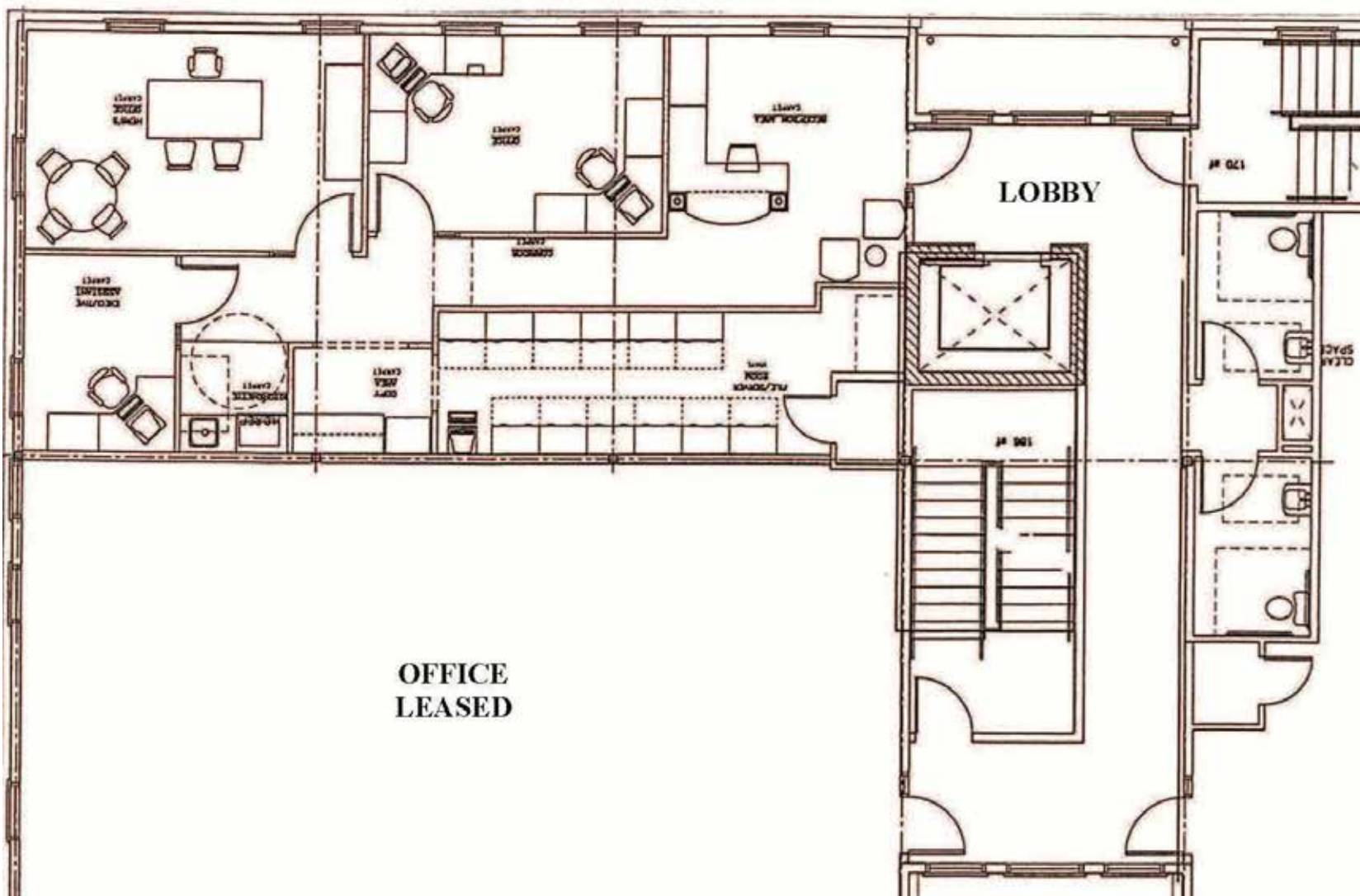
Private Offices; Conference Room; Waiting Room; Kitchenette; Breakroom; Open Work Area (part of open work area can be converted to one or two additional private offices); Storage Area

Suite Size: 2,153± SF
 Location in Building: 3rd Floor
 Lease Price: \$23 per Sq. Ft., plus utilities & cleaning





SUITE 201A - 1,154± SF

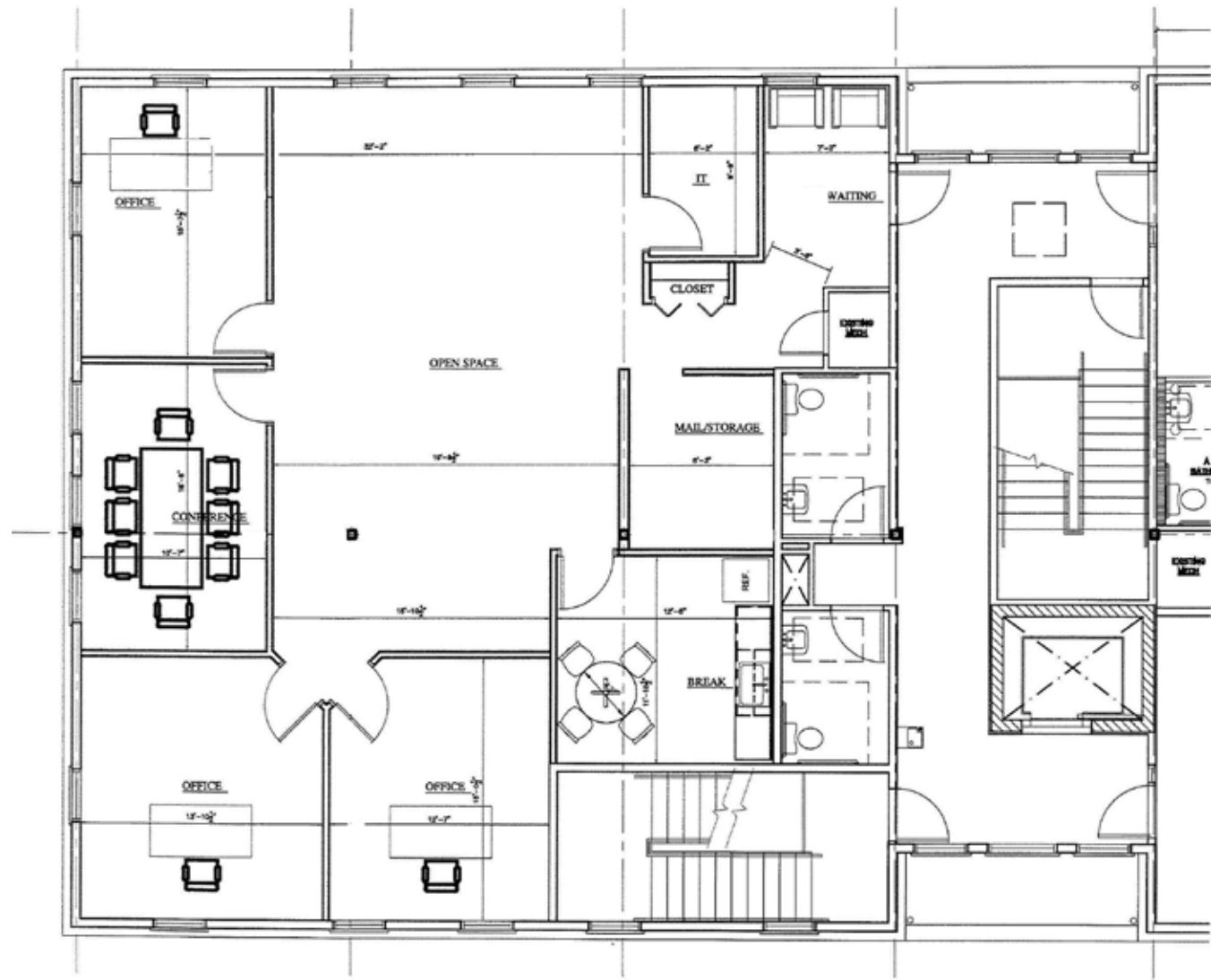


**OFFICE
LEASED**

SUITE 201A - 1,154± SF



SUITE 302 - 2,153± SF



SUITE 302- 2,153± SF

