

FOR LEASE CENTRALLY LOCATED OFFICE

18 North Main Street, Doylestown Borough, Bucks County, PA

Office Suite 1,200 SF



PENN'S GRANT REALTY
Corporation
COMMERCIAL INDUSTRIAL INVESTMENT
www.pgrealty.com

PRESENTED BY:

MATTHEW EISENSCHMID
Penn's Grant Realty Corporation
2005 S Easton Rd, STE 306, Doylestown, PA
215-489-3800 x5 • Matthew@pgrealty.com

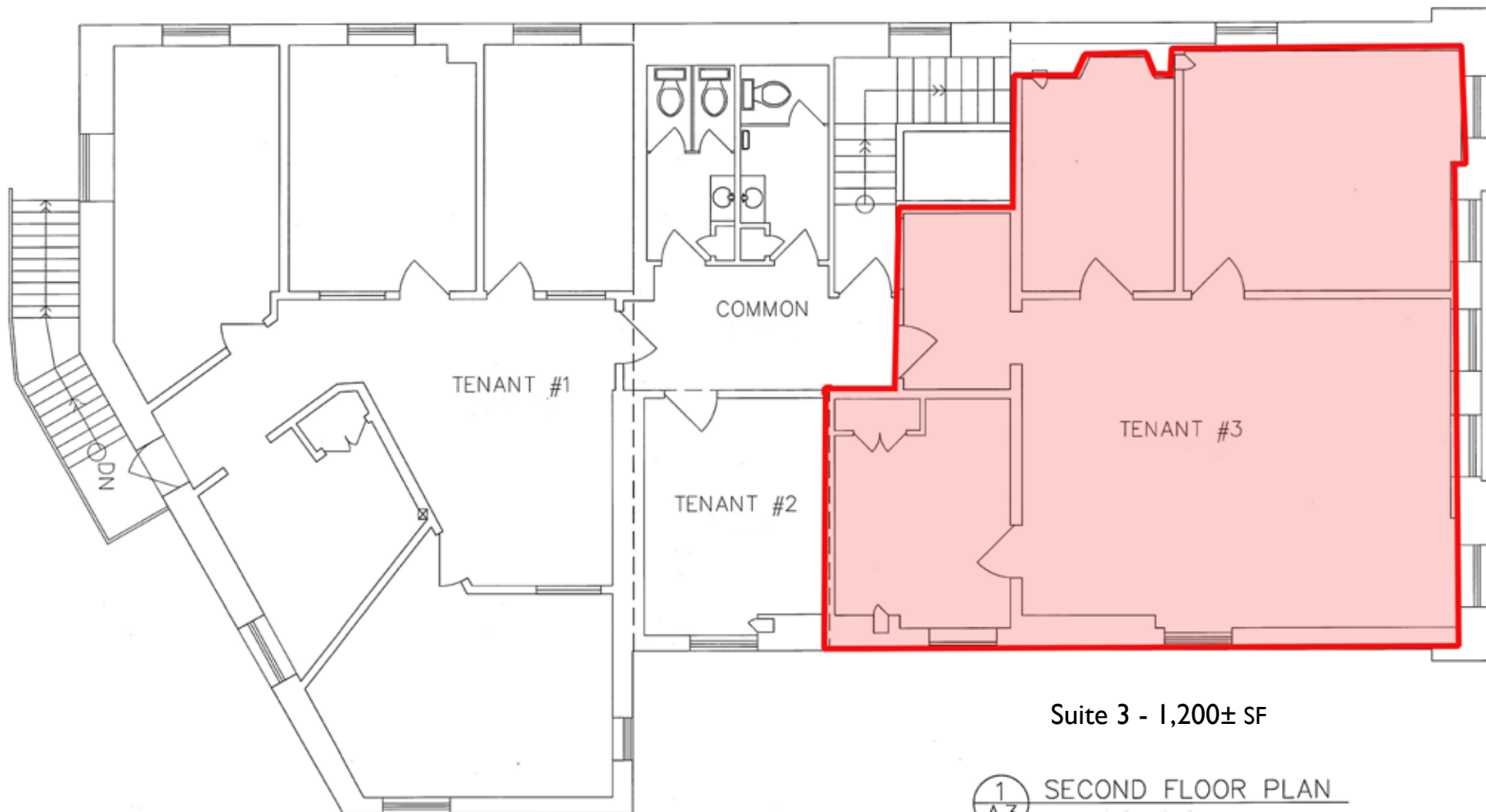
PROPERTY HIGHLIGHTS

- **Located in the Core of Doylestown Borough**
- **Exceptional Convenience and Access to Nearby Retail and Restaurants**
- **Immediate Access to Bucks County Courthouse and Municipal Buildings**
- **Ideal For Professional Office Users**
- **Proximity to SEPTA's Doylestown Train Station**

PROPERTY SPECIFICATIONS

Unit Size: 1,200± SF
Building Location: 2nd Floor in Front of Building
Location: Downtown Doylestown Borough
HVAC: Central Air Conditioning/Forced Hot Air
Water: Public
Sewer: Public
Utilities:..... PECO
Municipality: Doylestown Borough
Zoning: CC - Central Commercial
Lease Price: \$22 PSF plus utilities & janitorial





Suite 3 - 1,200± SF

1
A3 SECOND FLOOR PLAN

