

FOR LEASE CENTRALLY LOCATED OFFICES

68 East Court Street, Doylestown Borough, Bucks County, PA



PENN'S GRANT REALTY
Corporation
COMMERCIAL INDUSTRIAL INVESTMENT

Office Suites 217± SF - 699± SF

- Located in the Core of Doylestown Borough
- Exceptional Convenience and Access to Nearby Retail and Restaurants
- Immediate Access to Bucks County Courthouse and Municipal Buildings
- Ideal For Professional Office Users
- Proximity to SEPTA's Doylestown Train Station
- Recently Renovated Common Areas with Modern Finishes
- Dedicated Offsite Parking Lot

PRESENTED BY:

MATTHEW EISENSCHMID - Penn's Grant Realty Corporation
2005 S Easton Rd, STE 306, Doylestown, PA | 215-489-3800 x5 • Matthew@pcrealty.com

PROPERTY SPECIFICATIONS

Suite 2B

Unit Size: 265± SF (One (1) Open Office)

Building Location: 2nd Floor

Common Area Maintenance (2026): \$100/month

Lease Rate: \$1,000/month

Suite 2C

Unit Size: 217± SF (One (1) Open Office)

Building Location: 2nd Floor

Common Area Maintenance (2026): \$100/month

Lease Rate: \$1,000/month

Suite 3A

Unit Size: 217± SF (One (1) Open Offices)

Building Location: 3rd Floor

Common Area Maintenance (2026): \$100/month

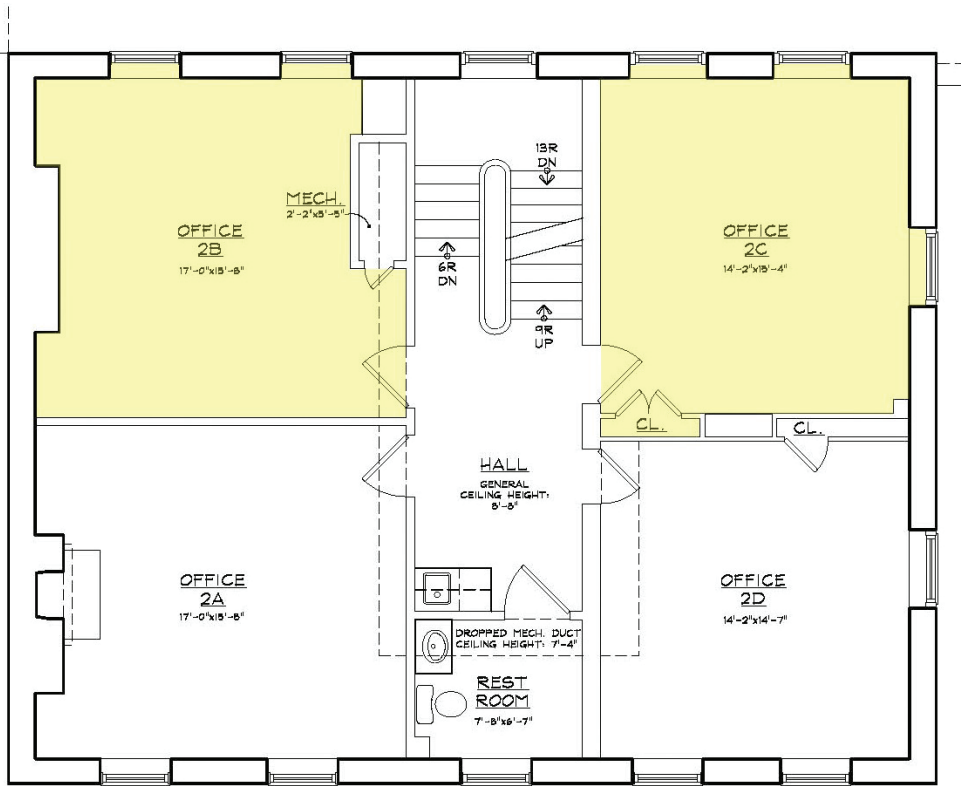
Lease Rate: \$750/month

Parking: Offsite Parking - 29 N. Church Street

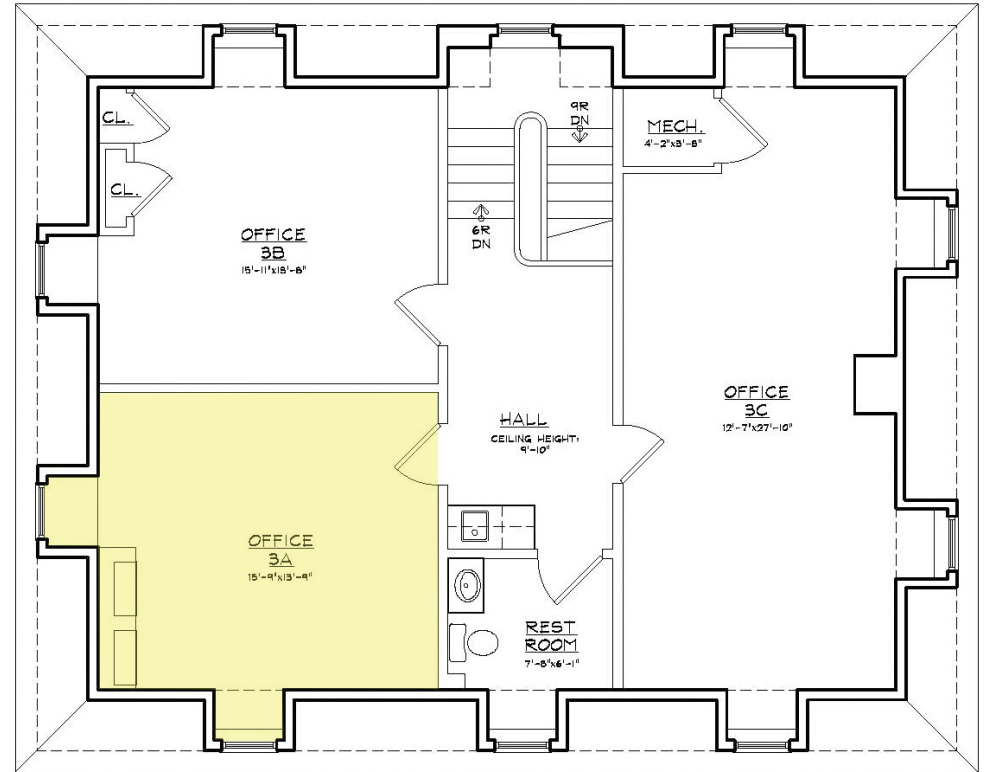
Utilities:..... PECO

Municipality: Doylestown Borough





Second Floor



Third Floor



Suite 2B 265± SF



Suite 2C - 217± SF



Suite 3A - 217± SF



68 East Court Street, Doylestown, Bucks County, PA

